

## INSTRUCTIONS

### Loop Block

3214, 3230, 3245, 3255

N15W24983 Bluemound Road, Pewaukee, WI 53072-4974

Telephone: (262) 691-3320 • Fax: (262) 701-5780 • Web: [www.harken.com](http://www.harken.com) • Email: [harken@harken.com](mailto:harken@harken.com)

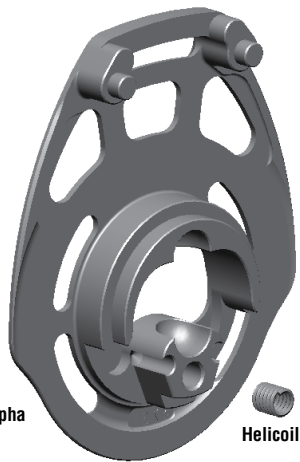
**WARNING!** Strictly follow all instructions to avoid an accident, damage to your vessel, personal injury, or death. See [www.harken.com/manuals](http://www.harken.com/manuals) for additional safety information.

 = Incorrect. Avoid to prevent accidents.

### Parts



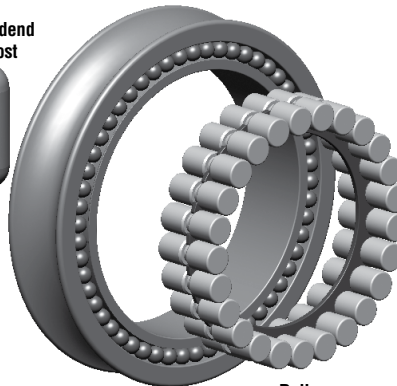
- 1) Head
- 2) Sideplates
- 3) Sheave
- 4) Deadend post
- 5) Mouth
- 6) Hex key
- 7) Blue Loctite® adhesive
- 8) Head securing line



Sideplate alpha

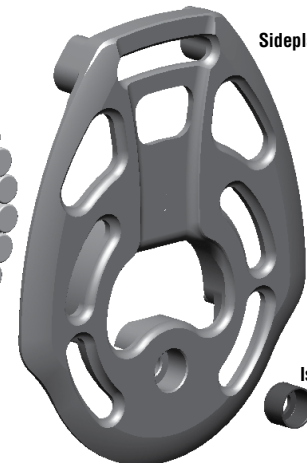
Helicoil

Deadend post



Sheave with side balls

Roller cage assembly



Sideplate beta

Isolator

Screw

### Specifications

Part No.	Sheave Ø	Max working load (MWL)		Breaking load (BL)		Max line Ø that fits through mouth
		lb	kg	lb	kg	
3214	57 mm	2500	1134	5000	2268	5 mm
3230	75 mm	5000	2268	10000	4536	8 mm
3245	100 mm	7500	3402	15000	6804	11 mm
3255	125 mm	11000	4990	22000	9977	14 mm

### You Must Supply

#### Loop and/or high-strength lashing line

When choosing a Harken Loup® soft-attach, be sure the Loup maximum working load in basket configuration exceeds the maximum working load of the block.

When choosing a lashing line, use a breaking load that is double the block's breaking load to account for strength loss from:

1. Knots slipping or breaking at a much lower load than line breaking load. Spectra® or Dyneema®-type lines require specialized knots.
2. Splices slipping or failing due to incorrect type or execution.
3. UV damage increasing with each passing year.
4. Chafing seriously reducing strength.

Go to [www.harken.com/knots](http://www.harken.com/knots) for additional information. If you are not comfortable choosing line, work with a qualified rigger.

**Note:** See chart for maximum line diameter that will fit through mouth.



**WARNING!** Knots weaken line considerably. Consult qualified rigger or line manufacturer for advice on securing line. Use high-strength loops or consult rigger for recommendations on lashing. Using the wrong line, or securing the line improperly, can cause an accident.

Dyneema is a registered trademark of DSM Dyneema.  
 Loctite is a registered trademark of Henkel AG & Company KGaA.  
 LOUP is a registered trademark of Yale Cordage.  
 Spectra is a registered trademark of Honeywell International, Inc.

Block no.	Sheave Ø	Screw	Isolator	Sideplate beta	Roller cage assembly	Sheave w/side balls	Deadend post	Helicoil	Sideplate alpha	Head securing line
3214	57 mm	HFS796	MP-3020	AL-3701	HBB85	H-34389A	AL-3238	MS-210	AL-3700	HCP1438
3230	75 mm	HFS806	MP-3021	AL-3727	HBB86	H-34390A	AL-3336	MS-221	AL-3726	HCP1419
3245	100 mm	HFS1271	MP-3022	AL-3752	HBB87	H-34391A	AL-3427	MS-251	AL-3751	HCP1419
3255	125 mm	HFS1275	MP-3023	AL-3770	HBB88	H-34392B	AL-3515	MS-259	AL-3769	HCP392